

# 21st Century Schools Consultation Document 2021

## THE EXPANSION AND REDEVELOPMENT OF CATHAYS HIGH SCHOOL

29 January - 19 March 2021



This document can be made available in Braille.  
A summary version of this document is available at [www.cardiff.gov.uk/cathayshighproposals](http://www.cardiff.gov.uk/cathayshighproposals)  
Information can also be made available in other community languages if needed.  
Please contact us on 029 2087 2720 to arrange this



# Contents

## Introduction

- What is this booklet about?
- Background
- What are we proposing to do?

## Consultation

- Views of children on the proposed changes
- How can you find out more and let us know your views?
- Your views are important to us

## Explanation of terms used in this document

### What is the Band B 21st Century Schools Programme?

- The provision of school places
- Condition & Suitability

### Schools serving the Cathays High School catchment area

### Why expand and replace Cathays High School?

- Demand for places city-wide
- Demand for places in the Cathays High School catchment area and neighbouring areas
- Cathays High School Condition & Suitability

### Autistic Spectrum Condition (ASC) Provision

- Why expand the Specialist Resource Base (SRB)?

### How would Post 16 Provision be affected?

### Land Matters including improving community facilities

### Facilities included in a school

### Site Map

### Quality and Standards

- Estyn
- Welsh Government categorisation of schools
- Cathays High School

### How would standards be affected by the changes?

- Standards
- Teaching and learning experiences
- Care support and guidance
- Leadership and management

### Additional Support for pupils

- How would support for pupils with English as an Additional Language be affected?
- How would pupils receiving Free School Meals be affected?
- How would Minority Ethnic pupils be affected?
- Impact on pupils in the Autism Specialist Resource Base (SRB)

# Contents

How would other schools be affected?

Admission Arrangements

Interim Arrangements

What are the benefits of the proposal?

Potential disadvantages of the proposal

Risks associated with the proposal

Alternative options

- Doing nothing
- Refurbishment of existing buildings
- Replacement of buildings on the existing site

Financial Matters

Human Resources Matters

Transport Matters

Learner Travel Arrangements

Partnerships

Impact of the proposal on the Welsh Language

Governance Arrangements

Equalities

Community Impact

Wellbeing of Future Generations

Potential Disruption to Pupils

What would happen to the existing Cathays High School site?

Frequently asked questions

Next steps, how to make your views known and feedback form

- What happens next?
- Key Dates
- Consultation period
- Statutory Notice
- Objection Report
- Determination of the proposals
- Decision Notification

Have your say!

- Consultation response form

# Introduction

## What is this booklet about?

This booklet is for parents/carers, school staff, school governors and anyone who has an interest in education in Cardiff. It will be of particular interest to parents/ carers of children attending, or expecting to attend, Cathays High School.

It sets out changes we are suggesting to provide high quality secondary school places and the reasons for these proposed changes.

## Background

On 14 December 2017, the Cabinet approved the scheme as part of Cardiff's Band B 21st Century Schools Programme.

The Band B Programme seeks to address the most acute sufficiency and condition issues in Cardiff.

On 17 December 2020, the Cabinet approved a recommendation to hold public consultation on proposals for the expansion and redevelopment of Cathays High School in line with Band B 21st Century Schools priority schemes.

This booklet contains information about the proposals for Cathays High School.

We want everyone to understand what is being proposed, so you can tell us what you think about the changes.

This is your chance to ask questions and make comments. We want to know your views because this helps us to make sure any proposals that go forward really work for children, young people and the community local to Cathays High School.

## What are we proposing to do?

- Expand Cathays High School from 1,072 places (5.5 Forms of Entry with 247 sixth form places) to 1,450 places (8 Forms of Entry with 250 sixth form places), from September 2023
- Replace the Cathays High School buildings with new build accommodation on the Maindy Centre site adjacent to Crown Way and North Road
- Expand the current Specialist Resource Base (SRB) for learners with Autism Spectrum Condition from 16 to 50 places in purpose-built accommodation in the new school buildings
- Upgrade community facilities in Cathays and Gabalfa through the significantly enhanced school facilities being made available for shared use with the wider local community
- Provide space for the local community to continue to have access to off-road open spaces for informal leisure use, recognising this is the current use at the Maindy site

# Consultation

## Who are we consulting with?

Our consultation process must follow the Welsh Government guidelines as set out in the School Organisation Code 2018.

As part of this, we are asking people what they think about the changes we are proposing.

Whilst the current pandemic is posing unique challenges and will require some changes to how we normally undertake face to face consultation opportunities, there continue to be a number of ways for people to tell us their views.

Table 1 below sets out who the Council is consulting:

| Table 1: Groups the Council is consulting with   |   |
|--|---|
| Children and young people  | Welsh Ministers   |
| Parents/carers   | Police & Crime Commissioner                               |
| School staff   | Central South Consortium Joint Education Service (CSCJES) |
| School Governing Bodies  | Welsh Language Commissioner                               |
| Local residents  | Rhieni dros Addysg Gymraeg (RhAG)                         |
| Local Members/Assembly Members (AMs)/ Regional Assembly Members/Member of Parliament (MPs) | Trade Unions  |
| Diocesan Directors of Education  | Childcare providers                                       |
| Neighbouring Authorities   | Mudiad Meithrin   |
| All Cardiff schools  | Wales Pre-School Providers Association                    |
| Estyn  | Clybiau Plant Cymru Kids Club                             |
| Communities First Partnership  | National Day Nurseries Association                        |
| Community Council's  | Future Generations Commissioner                           |
| Children's Commissioner  | Cardiff and Vale University Health Board                  |
| Voluntary Sector organisations   | Cardiff and Vale College                                  |
| St David's College   | Welsh Education Forum (WEF)                               |

## Views of children on the proposed changes

Cardiff is a Child Friendly City and the views of children and young people are key to the way education is delivered. It is important that when bringing forward proposals, suitable arrangements are made to consult with pupils. The Council will consult with pupils in local schools and the information gathered in these sessions will be included in the final consultation report.



## How can you find out more and let us know your views?

- The full consultation document and a summary document are available on the Council website at [www.cardiff.gov.uk/cathayshighproposals](http://www.cardiff.gov.uk/cathayshighproposals)
- If you are unable to access the document online, printed copies of this consultation document will be available by post on request. You may request a copy by telephoning **02920 872720**.
- We will also advise families with children in Cathays High School, and those with children of primary school age in the local area how they can access a copy of the document.
- We have organised opportunities for interaction with you. There are online meetings that you can attend where the changes we are proposing will be explained. You will have an opportunity to ask questions as part of these sessions. If you would like to attend an online meeting please contact us via e-mail to [schoolresponses@cardiff.gov.uk](mailto:schoolresponses@cardiff.gov.uk) confirming which meeting you would like to attend and we will provide a link and instructions on how you can access the meeting.
- Council officers will meet with the Governing Body and staff of Cathays High School. Given the ongoing pandemic and the public health restrictions arising out of this, these meetings will also take place online.
- You can also write to the Council to tell us what you think.

The dates of the public consultation meetings are set out below:

**Table 2: Consultation Meeting Dates**

| Nature of Consultation                     | Date/Time                               |
|--|---|
| Cathays High School Governing Body meeting | Wednesday 10th February, 5.00 p.m.      |
| Cathays High School Staff Meeting          | Monday 22nd February, 3.00 p.m.         |
| Online public meeting                      | Wednesday 24 February 2021 5:30pm – 7pm |
| Online public meeting                      | Monday 01 March 2021 2pm – 3:30pm       |

### Your views are important to us

Your views matter and we want you to tell us what you think about the changes we have suggested in this document.

You can do this by:

- Attending one of the online meetings listed above.
- Completing the online response form at [www.cardiff.gov.uk/cathayshighproposals](http://www.cardiff.gov.uk/cathayshighproposals)
- Completing the consultation response form, which you can find on page 37.
- Contacting the School Organisation Planning Team on (029) 2087 2720, by e-mail to [schoolresponses@cardiff.gov.uk](mailto:schoolresponses@cardiff.gov.uk) or by post to Room 401, County Hall, Cardiff, CF10 4UW. This can include requesting an officer call back if you have a specific question that you feel you would like further information about.

**The closing date for responses to this consultation is 19 March 2021.**

The Council is not able to consider any consultation responses received after this date.

# Explanation of terms used in this document

Please note the following terms used throughout this document:

**Admission Number** - all maintained schools admit pupils up to at least their Published Admission Number. The admission number is the number of pupil places available in each year group.

**ALN** - Additional Learning Needs. This may be due to learning difficulties, physical disabilities or behavioural problems. (ALN is sometimes referred to as Special Educational Needs).

**BREEAM** - BREEAM (Building Research Establishment Environmental Assessment Method) is a sustainability assessment method that is used to masterplan projects, infrastructure and buildings

**Capital funding for schools** – money used to build new school buildings or improve existing facilities.

**Community Schools** – a primary or secondary school where the Council arranges school admissions.

**Catchment area** – an area that a community school would normally serve. In Cardiff, children living within this area have higher priority for admission to the school than children outside of this area.

**ESOL** - English for Speakers of Other Languages. Students who did not learn English as their first language and/or continue to use a language other than English as a dominant language

**Local Authority** – an organisation that is officially responsible for all the public services and facilities in a particular area.

**Mainstream** - a mainstream school is a maintained school which is not a special school. Mainstream schools are not selective and do not require students to pay fees.

**NEET** - Not in Education, Employment, or Training. A person who is not in education, is not employed and not in any form of training.

**Number on Roll data** - the number of pupils at a school (not including nursery pupils).

**PLASC** - Pupil Level Annual School Census. In January of every year, the Welsh Government collects information from schools. This includes the number of pupils at each school, their age groups, home addresses, ethnicity, and data on Welsh language, Special Educational Needs, first language and pupils who have Free School Meals.

**School Action** - when a class or subject teacher gives extra support to a pupil with ALN.

**School Action Plus** - when outside specialists help the class or school staff to give extra support to a pupil with ALN. This is different or additional to the support provided through School Action.

**SRB** - Specialist Resource Base. A small class in a mainstream school for pupils with significant ALN. All pupils attending an SRB have a statement of ALN and are taught by specialist teachers and learning support assistants. Sometimes SRB pupils also have opportunities to attend some mainstream classes.

**Statement of Additional Learning Needs** - a child with a statement of ALN has learning difficulties which need special support. This means:

- the child has significantly greater difficulty learning than most children of the same age, or
- the child has a disability that needs different educational facilities from those that the school generally provides for children.

**Surplus places** - empty/unfilled places in a school.

**Statutory Notice** - a statutory notice is the formal publication of a finalised proposal. This will only be undertaken if a decision is made by the Council Cabinet to proceed with a proposal following consideration of all responses from the consultation process. This is a legal requirements as outlined in the School Organisation Code (2018).

# What is the Band B 21st Century Schools Programme?

The 21st Century Schools Programme is a major, long-term, strategic capital investment programme. It is jointly funded by the Welsh Government and Local Authorities and aims to create a generation of 21st century schools in Wales.

The first part of the Programme (Band A) ran until March 2019.

The second part of this funding (Band B) started in April 2019. As part of this, Cardiff Council is planning a c£284million investment programme.

Cardiff's Band B proposals focus on:

- providing enough school places across the city that are in the right place
- providing high quality educational facilities that will meet the diverse requirements of the 21st Century
- optimising the use of education facilities for the benefit of the wider community across Cardiff
- ensuring best value for money

## The provision of school places

All local authorities in Wales must make sure they provide enough school places for pupils of all ages.

School places must meet the needs of all pupils and must be suitable for any additional learning needs.

In order to provide the best quality of education it is important that funding provided by the Welsh Government is used effectively. This means matching the number of children to the number of school places as closely as possible.

## Condition & Suitability

As well as having the right number of school places, the Council must ensure that school facilities are fit for purpose. Schools must support the delivery of high quality learning for their pupils.

Cardiff has a very large education estate with over 127 school properties. Many sites comprise of multiple blocks, that were constructed during different decades. A large number of primary, secondary and special schools are in a poor state of repair.

Approximately £17m, or 14 %, of maintenance and condition issues of the estate were addressed through Band A of the 21st Century Schools investment programme. There has been significant investment in the construction of two new high schools in the East and West of the City, new primary school provision and suitability works undertaken in primary schools.

Recent new build primary school in Cardiff - Ysgol Glan Morfa





## Schools serving the Cathays High School catchment area

Table 3 below sets out the secondary schools serving the Cathays High School catchment area:

| Table 3: Secondary schools serving the area |   |           |                            |
|---|---|-----------|----------------------------|
| Name of School                              | Language medium and category of school          | Age range | Published Admission Number |
| Cathays High School                         | English-medium Community Secondary School       | 11-18     | 165                        |
| Corpus Christi Catholic High School         | English medium Voluntary Aided Secondary School | 11-16     | 215                        |
| St Illtyd's Catholic High School            | English medium Voluntary Aided Secondary School | 11-16     | 176                        |
| Bishop of Llandaff CiW High School          | English medium Voluntary Aided Secondary School | 11-18     | 180                        |
| St Teilo's CiW High School                  | English medium Voluntary Aided Secondary School | 11-18     | 240                        |
| Ysgol Gyfun Gymraeg Glantaf                 | Welsh-medium Community Secondary School         | 11-18     | 240                        |
| Ysgol Gyfun Gymraeg Bro Eder                | Welsh-medium Community Secondary School         | 11-18     | 180                        |

Children from the Cathays High School catchment area also attend other English-medium schools although the number of children able to do so is likely to reduce as populations across the city increase.

The English-medium community primary schools that are within the catchment area of Cathays High School are listed below.

| Table 4: Primary schools within the Cathays High School catchment |   |           |                            |
|---|---|-----------|----------------------------|
| Name of School  | Language medium and category of school  | Age range | Published Admission Number |
| Albany Primary School   | English medium Community Primary School | 3-11      | 60                         |
| Allensbank Primary School   | English medium Community Primary School | 3-11      | 45                         |
| Gladstone Primary School  | English medium Community Primary School | 3-11      | 30                         |
| Ysgol Mynydd Bychan   | Welsh medium Community Primary School   | 3-11      | 30                         |
| St Joseph's Catholic Primary School                               | English medium Faith Primary School     | 3-11      | 30                         |
| St Peter's RC Primary School                                      | English medium Faith Primary School     | 3-11      | 60                         |
| St Monica's Church in Wales Primary School                        | English medium Faith Primary School     | 4-11      | 20                         |

# Why expand and replace Cathays High School?

## Demand for places city-wide

Following a period of growth within the primary sector, there has been an increased demand for places at entry to secondary education city wide in the past five years.

City-wide projections show that the demand for places in the English-medium secondary sector will further increase during the period of the Band B investment programme. The number of pupils in each of the year 3 to year 6 age groups in English-medium primary schools exceeded the combined Admission Numbers of 3,460 places at entry to English-medium secondary schools at January 2020.

The projections, based upon the most recent school census data (PLASC) received in 2020, show that the number of pupils entering Year 7 in English-medium community schools city-wide will continue to increase until the 2023/2024 academic year.

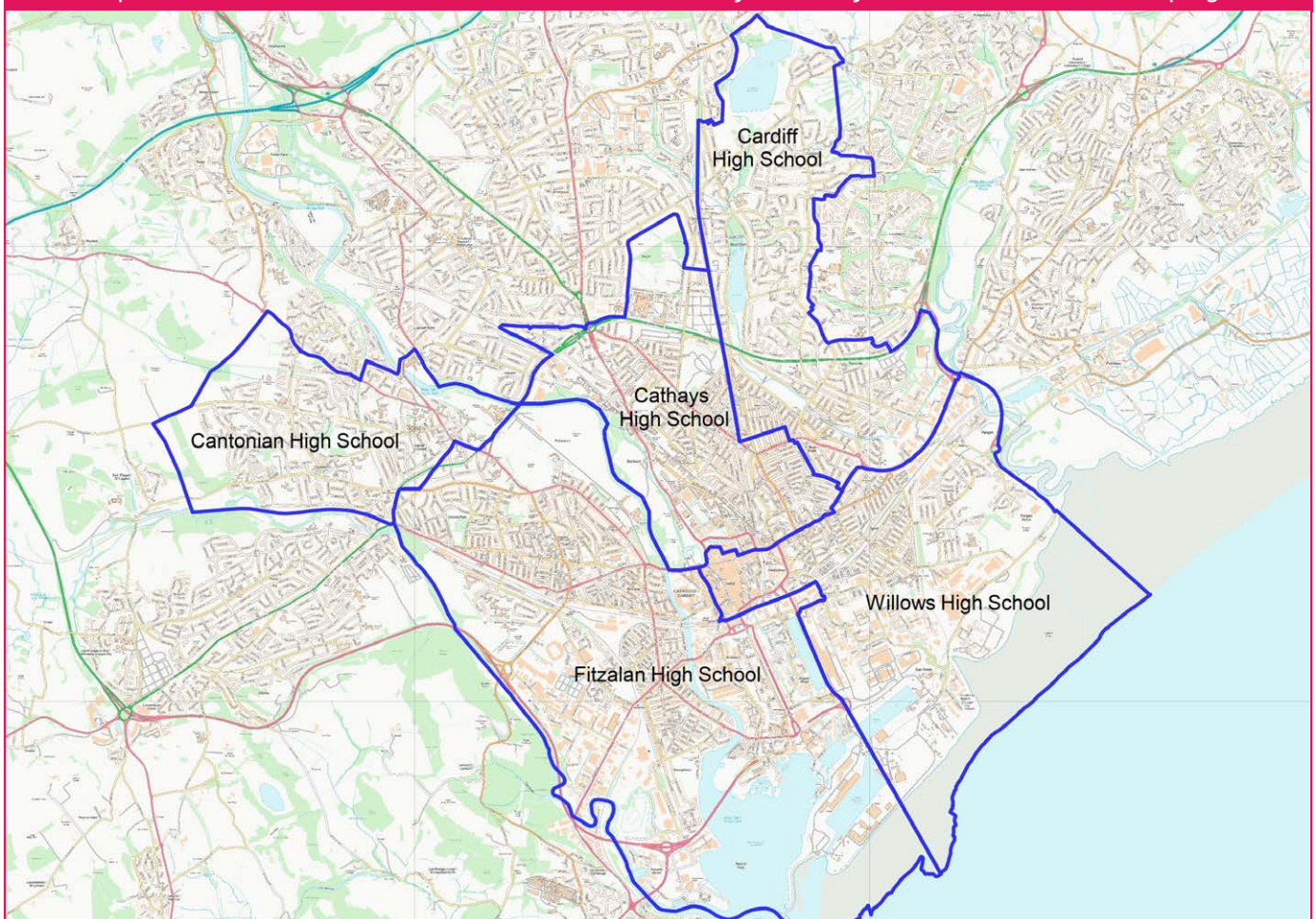
Based on the existing housing city-wide, the highest intakes at entry to secondary education (Year 7) of around 4,115 pupils are expected in 2022/ 2023 and 2023/ 2024. The intakes that follow are expected to reduce to around 3,900. A significant reduction in pupils entering secondary education, from existing housing, is projected from 2028/ 2029.

Separate to this, additional secondary school places will be required to accommodate children from new housing developments in the catchment areas of some existing schools.

The five secondary schools included in Cardiff's Band B 21st Century schools programme, including Cathays High School, are proposed to expand from a combined capacity of around 35.5 forms of entry to around 44 forms of entry. These proposals take account of the projected increasing intakes to secondary education in a number of areas of Cardiff in the period until 2024, and the continuing need for these places in the period that follows.

The map below shows the catchment area of the five community secondary schools in Cardiff's Band B programme.

The map below shows the catchment area of the five community secondary schools in Cardiff's Band B programme



## Demand for places in the Cathays High School catchment area and neighbouring areas

Between 2016-2020 the average number of children taking up English-medium places living in the Cathays catchment area has been 108 per year group. This has varied during the period with the lowest take up being 82 places and the highest 133 places.

The average number of children starting in English-medium reception classes over the last 3 years that live in the Cathays High School catchment area is 117 pupils (approximately four Forms of Entry). Current data shows that the local demand for places is projected to drop off slightly. However, there is expected to be some additional demand for places from new housing citywide that would have some effect on all schools. Data is not yet available for age groups that would enter primary education beyond 2024/25.

The numbers of pupils in some primary school year groups, that live in the catchment area of Cathays High School, have fluctuated significantly. Numbers per year group across the area have varied by between 11-48 pupils (on average 24% changes within age groups).

On average, 91 children per year group have transferred to English-medium community secondary schools, and 33 children per year group have transferred to English-medium Faith-based secondary schools in recent years. The remaining young people transfer to Welsh-medium secondary schools.

The majority of children in Year 6 in the area normally transfer to Year 7 (almost all children in the area continue to attend community or faith schools in Cardiff when they transfer to secondary school).

Current data shows that in the Band B investment period, 68-105 English-medium community secondary school places will be required to serve children and young people living in the existing Cathays High School catchment area. This would include approximately 33 places being taken up within Faith-based schools by pupils resident in the area.

Table 5 below sets out the net number of places that may be required to meet the demand for English-medium community and foundation places in each secondary school catchment area of the city (existing housing only), having taken account of the forecast take-up of places at Faith-based schools in each area.

| <b>Table 5: Forecast net demand for places at any English-medium community secondary school in each English-medium secondary school catchment area (at entry to Year 7), allowing for consistent take-up in faith-based schools</b> |   |      |      |      |                                    |      |      |      |
|---|---|------|------|------|------------------------------------|------|------|------|
| <b>Catchment Area</b>   | <b>Forecasts based on PLASC data - Pupils enrolled in primary education</b> |      |      |      | <b>Forecasts based on NHS data</b> |      |      |      |
|   | 2023  | 2024 | 2025 | 2026 | 2027                               | 2028 | 2029 | 2030 |
| Cantonian High School   | 98  | 106  | 113  | 85   | 78                                 | 77   | 71   | 70   |
| Cardiff High School   | 285   | 252  | 268  | 282  | 281                                | 270  | 236  | 195  |
| Cardiff West Community High School  | 221   | 200  | 193  | 219  | 173                                | 177  | 171  | 150  |
| Cathays High School   | 68  | 105  | 87   | 89   | 82                                 | 69   | 69   | 68   |
| Eastern High School   | 326   | 269  | 323  | 283  | 313                                | 278  | 298  | 274  |
| Fitzalan High School  | 384   | 309  | 328  | 317  | 343                                | 265  | 257  | 241  |
| Llanishen High School   | 330   | 308  | 302  | 330  | 302                                | 281  | 265  | 238  |
| Radyr Comprehensive School  | 180   | 176  | 170  | 191  | 159                                | 146  | 139  | 132  |
| Whitchurch High School  | 353   | 313  | 327  | 320  | 347                                | 276  | 295  | 267  |
| Willows High School   | 189   | 171  | 150  | 148  | 165                                | 142  | 144  | 108  |
| Total demand for English-medium and Community/ Foundation places  | 2429  | 2266 | 2308 | 2323 | 2299                               | 2094 | 2058 | 1918 |



The numbers in Table 5 take account of the most recent take-up of places. They do not allow for changes of pupil preference patterns expected as a result of planned changes to secondary schools in Cardiff. Currently there are no large planned residential developments within, or in close proximity to, the Cathays High School catchment area. This means there would be no significant increase in the child population within the catchment area as result of large new housing developments.

Based on the numbers of pupils in existing housing in the Cathays High School catchment area an English-medium community secondary school of three forms of entry, providing 90 places per year group, would be sufficient to serve the existing catchment area. This would apply for the duration of the Band B investment period and the years immediately after this.

However, planned housing in the south of the city will significantly increase pupil numbers in neighbouring school catchment areas.

The current and projected demand for places at entry to secondary school within the neighbouring catchment areas of Fitzalan High School and Cardiff High School exceed the number of places available at each school. The projected demand from housing within the catchment area of Llanishen High School is also at a high level. It is expected to increase further within and beyond the Band B period as new housing is developed between the communities of Lisvane and Pontprennau.

Planned housing developments within the Fitzalan High School catchment area, including those with outline or full planning permission, will affect neighbouring English-medium community schools, including Cathays High School.

If Cathays High School remained at its existing capacity of 5.5 forms of entry, or a minor expansion to six forms of entry, there would not be enough places to meet the demand from within its catchment area and the excess demand from within the neighbouring catchment area of Fitzalan High School.

A temporary increase to the admission number at Cathays High School, to eight forms of entry in Year 7 (240 places), was implemented for the 2020/21 intake, and all extra places were allocated. The central location of the school enabled it to meet the excess demand for places, and to accommodate late applicants, from the south, central and north areas of the city. Even with this increase, Cardiff retained less than 5 % surplus places city-wide in the year group. Current projection data shows that similar measures, retaining the intake at Cathays High School of 240 places, are likely to be needed in coming years.

It is expected that Cathays High School would be fully subscribed at entry to Year 7, based on pupil populations in the wider area, until at least 2024. The school would therefore have eight forms of entry enrolled in some year groups until at least 2028.

A permanent expansion of Cathays High School to eight forms of entry would:

- Create an efficient class organisation;
- Provide sufficient capacity to allow the projected number of children within the Cathays High School catchment area, requiring a place in an English-medium community high school, to attend;
- Provide surplus capacity to enable the excess demand from neighbouring catchment areas to be accommodated;
- Ensure that citywide capacity and surplus places would be appropriately balanced, in the context of projected reductions in secondary school pupil numbers at the end of the decade and potential uplift in the birth cycle in future years.

# Cathays High School Condition & Suitability

In order to prioritise schools within the Band B programme all school properties were given a rating.

The ratings were based on:

- Sufficiency of places available
- Condition of the school buildings
- Suitability of the environment for teaching

Ratings were from A to D, with D being the lowest rating.

All Councils in Wales were informed by the Welsh Government that in order to receive capital funding investment from the Band B 21st Century Schools programme, all school buildings rated as D for condition were to be replaced/upgraded.

| Table 6: Condition and suitability gradings |  |  |
|---|--|--|
| Grading                                     | Condition  | Suitability  |
| A   | Good and operating efficiently.                            | Good. Facilities suitable for teaching, learning and wellbeing in school.  |
| B   | Satisfactory but with minor deterioration.                 | Satisfactory. Performing as intended, but does not effectively support the delivery of the curriculum in some areas. |
| C   | Poor with major defects.                                   | Poor. Teaching methods inhibited / adverse impact on school organisation.  |
| D   | End of Life; life has expired or risk of imminent failure. | Very Poor. Buildings seriously inhibit the staff's ability to deliver the curriculum.                                |

Table 7 below gives information on school capacity, condition and suitability of Cathays High School.

| Table 7: School capacity, condition and suitability |                          |                                 |                                   |          |
|---|--------------------------|---------------------------------|-----------------------------------|----------|
| Name of School                                      | Type of school           | * Condition of School Buildings | * Suitability of School Buildings | Capacity |
| Cathays High School                                 | Secondary English-medium | C- Poor                         | C- Poor                           | 1,072    |

Cathays High School is rated as a "C" category for condition, which means the buildings are poor condition with major defects. A significant percentage of its accommodation is housed in demountable accommodation.

Cathays High School is located on a site measuring approximately 2.1 hectares, adjacent to North Road and Crown Way. The constrained school site limits access for pupils to outdoor facilities and does not include any school pitch provision for pupils.

Cathays High School has been assessed as Condition category C (Poor with major defects) and Suitability category C (Poor). Whilst some priority maintenance issues are currently being resolved through the Council's Capital Asset programme, this would not address all condition issues. Planned works would not significantly improve the suitability of the main building nor all demountable accommodation.



# Autism Spectrum Condition (ASC) Provision

## Why expand the Specialist Resource Base (SRB)?

Places for pupils with Autism Spectrum Condition (ASC) are offered in a range of settings across Cardiff, which support identified pupil needs. This includes supported placements at both primary and secondary level in mainstream schools and places in Specialist Resource Bases (SRB) and special schools.

At present, both secondary and primary schools in Cardiff host Specialist Resource Bases (SRB).

The purpose of an SRB is to enable learners with additional learning needs to succeed in a mainstream learning environment. Pupils are supported to attend mainstream lessons and benefit from the full range of educational opportunities available to all pupils at the school.

Most children with an ASC do not require a special school place in order to learn and thrive. Many young people successfully attend a local mainstream school and access additional specialist support through an SRB.

Although the Council increased ASC places between 2012 and 2017, from 82 to 140, it is anticipated that demand for ASC SRB places will continue to grow over the next 5-10 years. Due to increased demand, and the shortage of specialist ASC places in Cardiff, an increase in the number of places available at the ASC base at Cantonian High School has been agreed.

A Specialist Resource Base for pupils with Autism Spectrum Condition (ASC) is located at Cathays High School and supports up to 16 pupils aged 11-18.

The SRB has designated accommodation where the pupils may access small group or individual teaching.

The SRB staff provide additional pastoral and teaching support to the pupils, and provide training and information to main school staff to support the inclusion of young people.

The base also provides a nurturing and 'safe' environment for young people when it is required.

The provision for the young people is tailored according to need. Young people experience short or prolonged periods where they are taught mainly or solely in the SRB, because of anxiety or sensory challenges, or as part of a transition from a more specialist environment.

It is proposed to retain the SRB at Cathays High school, as part of the future school, to ensure continued provision for current and future pupils.

The proposed expansion of Cathays High School in new build, 21st Century accommodation presents an opportunity to further develop the specialist provision within the school and to increase the number of places available from 16 to 50.

The current expertise and inclusive practice of the school would be maintained.

The additional places would help to ensure there are sufficient places to meet increased demand arising out of a growing pupil population and a growing incidence and identification of ASC in Cardiff.

## How would Post 16 provision be affected?

Research suggests that the minimum size of sixth form provision should be no less than 200 places. Much of the funding that a school receives is based on the number of pupils in the school. The amount of funding for pupils in sixth form (age 16-19) is less than it is for pupils in years 7-11 (age 11-16).

A sixth form of 250 places should provide a level of funding that would support the range of relevant courses and qualifications available without the need for financial subsidy from 11 – 16 funding or alternative sources.

Cathays High School currently offers Post 16 provision to learners undertaking Entry Level, Level 1, Level 2 or Level 3 programmes of study. Typically, 50 - 60 % undertake a range of qualifications either at A Level or equivalent. Subjects offered currently include Art, Biology, Chemistry, Physics, Medical Science, Business, Health and Social Care, Sociology, History, English Language & Literature, Maths and the Welsh Baccalaureate Qualification (WBQ).

Around 25-30 % of pupils complete Level 2 qualifications in GCSE resits in English, Maths, Science, Media Studies, Health & Social Care, IT, Art. In addition, pupils also have the opportunity to undertake the Skills Challenge Certificate as part of the Welsh Baccalaureate.

Typically, around 25 % of students pursue English for Speakers of Other Languages (ESOL) qualifications from Entry Level 3 to Level 1. These pupils are recent arrivals to the UK and having completed the ESOL qualification they will often progress to a L2 programme. Others, having completed ESOL will move into Further Education provision or employment.

At present, post-16 learning is integrated within the whole school; pupils are taught in classrooms alongside Key Stage 3 and Key Stage 4 learners with no designated sixth form space with the exception of a sixth form study space.

The school currently retains approximately 50 % of its pupils moving from Key Stage 4 to Post 16 learning, whilst there are around 25 % of students in the school post-16 provision who have not been in school in the UK prior to post-16 as they are new arrivals to the country. The remaining learners either continue their education at college or undertake work-based learning; 0 % of pupils were not in Education, Employment or Training (NEET) in 2018/19.

As part of the expansion of Cathays High School, it is proposed to increase post-16 (sixth form provision) to allow for up to 250 pupils. This is consistent with the average proportion of learners continuing on to sixth form provision in English-medium schools across the city.

This will enable pupils to have access to a broader curriculum, providing increased opportunities for all learners. With improved facilities and a discrete sixth form learning environment the school will be able to offer a bespoke curriculum that would be facilitated through close collaboration with industries, colleges and work-based learning providers. This will ensure that there is an appropriate and purposeful learning pathway for all pupils of both an academic or vocational route. This would be particularly beneficial for learners who are new arrivals to the UK to have a potentially broader qualification base alongside their ESOL studies and would increase opportunities for community groups and multi-agencies to support their learning, wellbeing and post-19 pathways.

Creating a larger sixth form at Cathays High School creates the capacity and economies of scale to be able to improve:

- standards and achievement - raising standards of success and achievement and increasing progression to Higher Education and employment;
- choice - improving the breadth and depth of curriculum creating greater choice for all young people to choose learning pathways that best enable them to mix and match vocational, academic and occupational qualifications and experience;
- participation - increasing participation and attendance rates;
- equality - to ensure every sixth form student is able to access the curriculum of choice including those who are new arrivals to the UK;
- financial viability and effectiveness - providing a cost effective and efficient model for delivery, generating economies of scale and expanding economies of scope.

Sixth form projections will be kept under review and proposals to increase/ decrease provision would be brought forward at the relevant time if required.

## Land Matters including improving community facilities

The current Cathays High School site is located on a site measuring approximately 2.1 hectares, adjacent to North Road and Crown Way.

The constrained school site limits access for pupils to outdoor facilities and does not include any full size school pitch provision for pupils. Formal arrangements exist at present for Cathays High School to use grass pitches at Heath Park, and transport arrangements are in place to support this at an annual cost to the Council of c£21,000.

The Maindy Centre, including the indoor leisure centre and pool, the Maindy Cycle and BMX track, and outdoor football pitches, is located in close proximity to the school on the opposite side of Crown Way, also adjacent to North Road.

The Maindy cycle track was built for the British Empire and Commonwealth Games in 1958 and has been home to the Maindy Flyers Cycling Club since 1995. The club has approximately 200 members aged 5 to 18 years old. Cardiff's Road Safety Centre, providing adult and child cycle training, is also located at the Maindy site.

Maindy Centre is Cardiff's only outdoor cycle track and is the home of the grassroots cycling talent in the city. The track is a popular outdoor venue that requires investment. However the cycle club has outgrown the facility. The Council is keen to continue to support Cardiff's home-grown talent to excel and progress to represent Wales competitively on the international stage.

In order to further enhance the development and promotion of cycling in the city, a new track facility, located in the heart of Cardiff Bay at the International Sports Village, is to be brought forward in 2021, bringing a greater range of cycle track opportunities to our capital.

The construction of new facilities for Cathays High School on the Maindy Centre site will enable the expansion of the school in an area that is well located within the community that the school serves.

The Council agreed in 2016 that the leisure and sporting facilities at Maindy Centre would be operated by Better Leisure (GLL), and a long term lease arrangement is in place. As part of a revised lease the school will continue to have access to indoor facilities at Maindy Centre and an arrangement will be explored with GLL for the management of external sports facilities and shared use of the carpark outside of the school day.

The location of the sites, off North Road and Crown Way, provide an opportunity to enable significant new investment in the community and in the range of facilities available for use by all. The design of the school would support open community access to some multi use games areas outside of school hours and re-provide community land where possible.

If agreed to proceed, the land south of the existing Maindy cycle track and other areas would be made available for exercise; dog walking; access between Gelligaer Street and Crown Way/North Road; and general leisure activities.

The BMX track is expected to be retained, but could potentially be relocated elsewhere on the Maindy or current school site should it be deemed beneficial to the project and the community.

The existing playground will sit outside of the scope of the proposed redevelopment and will be retained. There are further opportunities presented by the levels and existing conditions of the site which provide opportunities for a holistic landscape design that incorporates sustainable drainage, ecology and habitat strategies.

The proposed strategy to provide a combination of all-weather pitches on-site and retaining current grass pitches at Heath Park would enable curriculum requirements to be met, providing pupils with access to a range of facilities for a variety of sports.

## Facilities included in a school

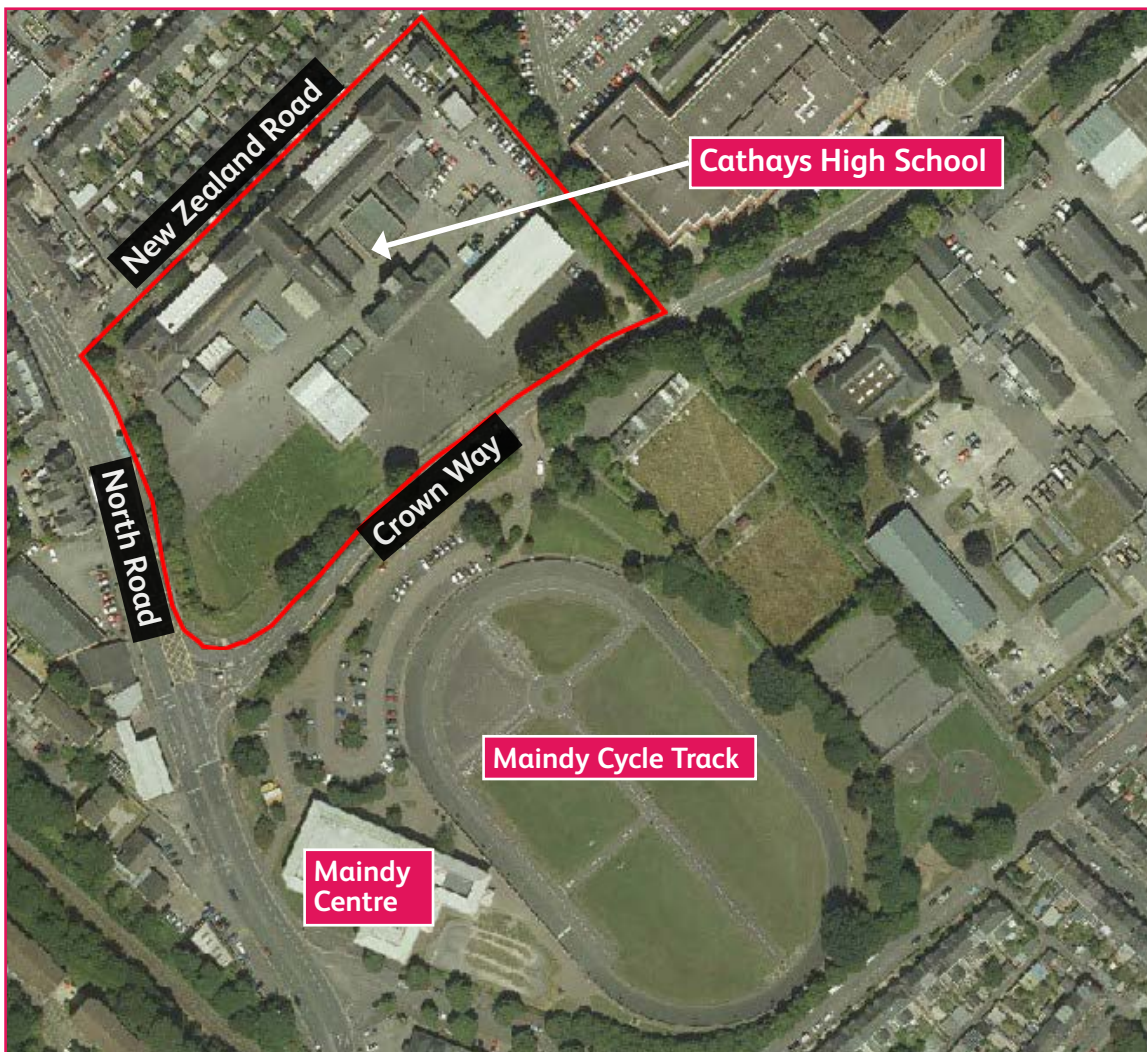
Any new buildings would meet Welsh Government funding conditions such as BREEAM certification and be designed in accordance with the Department of Education: Area guidelines which set out that the following facilities need to be included in any school:

- Teaching space
- Internal and external halls/ dining area
- Learning resource areas
- Staff and administration
- Storage
- Toilets and personal care
- Kitchen facilities
- Circulation, plant and internal walls
- Withdrawal areas to support small group/SEN working

Detailed designs would be agreed with relevant Headteachers and governing bodies if the proposals are progressed to implementation. The input of children and young people into developing the site would be integral to project implementation at all stages.

The design process for the new school has not yet commenced. This would include input from a range of stakeholder including governing bodies, headteachers, staff and children.

## Site map





## Quality and Standards

The Council works closely with two organisations in order to monitor the performance of schools and to support school improvement.

Estyn is the office of Her Majesty's Chief Inspector of Education and Training in Wales.

Estyn inspects quality and standards in schools and other education providers in Wales.

The Central South Consortium Joint Education Service (CSCJES) is the regional School Improvement Service for the five councils of Bridgend, Cardiff, Merthyr Tydfil, Rhondda Cynon Taff and the Vale of Glamorgan. The Council works with the Consortium to support and challenge all schools in Cardiff.

Local Authorities, such as Cardiff Council, must consider Estyn reports and other evidence about school performance and effectiveness when suggesting changes to schools.

Local Authorities must also consider the likely impact of the proposed changes on:

- standards, wellbeing and attitudes to learning
- teaching and learning experiences
- care support and guidance
- leadership and management (leadership, improving quality, partnership working and resource management)

### Estyn

Schools are inspected as part of a national programme of school inspection. The purpose of an inspection is to identify good features and shortcomings in schools in order that they may improve the quality of education offered and raise standards achieved by their pupils (Estyn).

The relevant Estyn Inspection reports provide grades against Key Questions and provide schools with recommendations for improvement.

Inspections carried out between 2010 and 2017 provided judgements against three key questions

Key Question 1: How good are the outcomes?

Key Question 2: How good is provision?

Key Question 3: How good are leadership and management?

Inspectors also provided an overall judgement on the school's performance at that time and prospects for improvement.

In these evaluations, inspectors used a four-point scale as set out in Table 8 below:

| Judgement      | What the judgement means  |
|----------------|---|
| Excellent      | Many strengths, including examples of sector-leading practice           |
| Good           | Many strengths and no important areas requiring significant improvement |
| Adequate       | Good Strengths outweigh areas for improvement                           |
| Unsatisfactory | Important areas for improvement outweigh strengths                      |

If a school is judged as adequate or unsatisfactory, they will be subject to monitoring by Estyn or the Local Authority until such time as they are judged to have made sufficient progress to be removed from the list of schools requiring improvement,

You can find inspection reports on the Estyn website [www.estyn.gov.uk](http://www.estyn.gov.uk)



## Welsh Government categorisation of schools

In 2014, the Welsh Government introduced a new categorisation system.

It looks at each school's standards and how much a school is able to improve. This identifies the level of support schools require. Organisations such as the Central South Consortium (CSCJES) and the school improvement service then work with schools' leaders to identify, provide and/or broker any support required for further improvement.

The categorisation system is described in Table 9 below:

| Category of support | What the category means  |
|---------------------|--|
| Green               | A highly effective school which is well run, has a strong leadership and is clear about its priorities for improvement.  |
| Yellow              | An effective school which is already doing well and knows the areas it needs to improve.                                 |
| Amber               | A school in need of improvement which needs help to identify the steps to improve or to make change happen more quickly. |
| Red                 | A school in need of greatest improvement and will receive immediate, intensive support.                                  |

A school's colour-coded category is decided by how it is rated for standards (1-4) and for how able it is to improve (A-D).

1 is the best rating for standards and A is the best for improvement.

Updated categorisations for each school are published every year in January.

More information about the categorisation scheme can be found in the Welsh Government's parents' guide to the National School Categorisation System here:

<http://gov.wales/docs/dcells/publications/150119-parents-guide-en.pdf>

### Cathays High School

Estyn inspected Cathays High School in February 2013.

At that time, the school's performance was judged as good.

In the inspection report, Estyn stated that:

- The school's strong performance in key stage 4 compares favourably with that of similar schools and is higher than expectations, especially in the level 2 threshold including English and mathematics;
- pupils have positive attitudes towards the school community and are fully engaged in learning;
- pupils who receive additional support to meet their individual needs make clear progress;
- teachers ensure a positive learning environment in lessons and plan a sequence of learning activities that enable pupils to sustain their learning and make progress;
- the wellbeing of pupils is a high priority and provision to support the diverse nature of pupils' needs has a number of strengths;
- the school works effectively with a range of partners to enhance pupils' learning experiences and offers an extensive range of opportunities for out of school hours activities.

The school's prospects for improvement were also judged as good.

In the most recent Welsh Government School Categorisation at January 2020, Cathays High School was categorised as Green.

This means Cathays High School is:

- a well run school with strong leadership
- clear about priorities for improvement
- has a track record in raising standards
- has the capacity to support other schools

# How would standards be affected by the proposed changes?

## Standards

The Council has made a clear commitment to continuing the investment in, and improvement of, Cardiff schools to make sure every child has the best possible start in life ([www.cardiffcommitment.co.uk](http://www.cardiffcommitment.co.uk)).

The delivery of 21st Century, Learning environments will ensure that there are appropriate, high quality school places for young people, which meets the needs of Cardiff's growing and changing population.

The Council works closely with the governing bodies of schools to make sure that, standards in schools are high, that teaching is good and that leadership and governance is strong.

The Council does not expect the proposal to have any negative impact on the quality of standards of education. The Council expects that 21st century school facilities will better support the delivery of high quality education.

## Teaching and learning experiences

The new school facilities will support the delivery of the new 'Curriculum for Wales' for learners (3-16) which is due to be implemented in Welsh schools from 2022.

The new curriculum will adopt an approach, which is inclusive and designed to address the need to prepare children and young people in Wales to thrive and be successful in a rapidly changing world.

It is recognised that the new curriculum should provide breadth, enable greater depth of learning, ensure better progression, provide scope for more imaginative and creative use of time, and place a much greater emphasis on skills.

The proposed new 21st Century School will meet the needs of this new, flexible curriculum along with providing facilities that allow for real-world practical learning with local organisations and employers context

## Care support and guidance

All schools have a suitable range of policies and provision in place to promote pupils' health and wellbeing.

Cathays High School is committed to fostering a school community in which learning is valued and pupils achieve their potential in a happy and safe environment in which they show respect and tolerance for others.

The Council would work with the leadership of the school to make sure everyone at the school understands their responsibility for helping to improve and sustain care support and guidance.

## Leadership and Management

The Council would continue to work with the leadership of the school to make sure everyone in the school understands their responsibility for helping to improve and sustain high performance. It would support the school to have good relationships with parents and other partners so that pupils receive a high quality education.

The proposed changes would be planned carefully so that the schools leadership and governance are not disrupted, which could have a negative impact on educational outcomes.

## Additional support for pupils

Table 10 below shows the 2020 percentages of:

- Pupils with Additional Learning Needs
- Pupils receiving Free School Meals
- Pupils with English as an Additional Language
- Minority Ethnic pupils

**Table 10: The 2020 percentage of pupils at Cathays High School with Additional Learning Needs, receiving Free School Meals (FSM), with English as an Additional Language and identified as a Minority Ethnic pupils:**

| School                      | % of Pupils on School Action | % of Pupils on School Action Plus | % of Pupils with a statement of ALN | % of Free School Meal Pupils - 3 year average | % of Pupils with English as an Additional Language | % of Minority Ethnic Pupils |
|-----------------------------|------------------------------|-----------------------------------|-------------------------------------|---|--|-----------------------------|
| Cathays High School         | 13.8 %                       | 7.4 %                             | 3.0 %                               | 31.9 %  | 30.7 %   | 80.7 %                      |
| Cardiff average (Secondary) | 11.7 %                       | 7.4 %                             | 3.0 %                               | 20.5 %  | 7.1 %  | 32.9 %                      |
| Wales average (Secondary)   | 12.9 %                       | 7.7 %                             | 2.3 %                               | 17.0 %  | 2.8 %  | 10.8 %                      |

\*further information can be found on the website: [www.mylowalschool.gov.wales](http://www.mylowalschool.gov.wales)

### How would support for pupils with English as an Additional Language be affected?

Pupils that receive support because they have English as an additional language can be supported in any school in Cardiff.

As set out at Table 10, 30.7 % of the pupil population at Cathays High School have English as an additional language (EAL).

There is no information available that suggests that the proposals would have a negative effect on how children with English as an additional language are supported. Cathays High School would continue to provide support that is appropriate to the individual needs of each pupil.

### How would pupils receiving Free School Meals be affected?

Some of the funding that a school receives is based on the number of pupils in the school who receive Free School Meals. All schools in Cardiff would receive funding for these pupils.

As set out at Table 10, 31.9 % of the pupil population at Cathays High School receive Free School Meals.

There is no information available that suggests that the proposals would have a negative effect on pupils at the school who receive Free School Meals.

## How would Minority Ethnic pupils be affected?

As set out at Table 10, the majority of the current pupil population at Cathays High School (80.7%) identify as Minority Ethnic.

The needs of individual pupils are assessed and provided for as appropriate. There is also no information available that suggests that the proposals would have a negative effect on provision for any ethnic group. The options that will become available to enhance learning opportunities would make use of the expertise and skills within the local area.

## Impact on pupils in the Autism Specialist Resource Base (SRB)

A 21st Century school building will allow the new SRB facilities to be tailored to the needs of the young people who access it. It can be designed to fit their learning needs and provide a calm and structured environment to help with anxiety and sensory challenges.

The current expertise and inclusive practice of the school would be maintained. The expansion, and new facilities, would provide opportunities for staff development and for enhancing pupils' learning in purpose built facilities.

The Council acknowledges that change in routine and environment can be unsettling and upsetting for pupils on the Autism Spectrum. Pupils attending the ASC SRB would be supported by ASC staff to enable them to adapt to the changes proposed.

## How would other schools be affected

At present, a proportion of pupils that live in the Cathays High School catchment area choose to attend other English-medium or Welsh-medium secondary schools or faith based secondary schools across Cardiff.

As the city-wide population entering secondary education increases, there will be fewer surplus places at secondary schools overall. This will reduce the number of pupils resident in the Cathays catchment area that are able to gain access to other English-medium community schools. This would occur regardless of whether these proposals proceed or do not proceed.

The proposal to expand and replace Cathays High School with new build facilities is expected to further reduce the number of pupils within the catchment area who choose to commute to other English-medium community schools.

The Cathays High School catchment is adjacent to the catchment areas of Cardiff High School, Fitzalan High School, Llanishen High School, Whitchurch High School and Willows High School.

The number of pupils resident in the neighbouring Fitzalan High School catchment area who choose to attend an English-medium secondary school is already in excess of the numbers of places available at the school. The number of houses in this catchment area will increase further in coming years as a result of new housing. As fewer children resident in the catchment area of Fitzalan High School will gain admission to St Cyres High School, Penarth in future years the number of children requiring places in Cardiff schools will increase.

The pupil population in the wider area will therefore remain at a high level with pupils accessing places in neighbouring areas. Intakes to Fitzalan High School and Cathays High School are expected to remain at a similar level to those at present, throughout the Band B investment period (2019-2024).

Tables 11 and 12 below set out how the number of pupils enrolled at local schools may be affected by the proposed changes.

Table 11: Number of pupils enrolled at local schools if the proposals **were implemented** from September 2023

| School                 | Recent number of pupils enrolled |               |               |               |               | Forecast number of pupils enrolled |               |               |               |               |
|------------------------|----------------------------------|---------------|---------------|---------------|---------------|------------------------------------|---------------|---------------|---------------|---------------|
|                        | 2016/<br>2017                    | 2017/<br>2018 | 2018/<br>2019 | 2019/<br>2020 | 2020/<br>2021 | 2021/<br>2022                      | 2022/<br>2023 | 2023/<br>2024 | 2024/<br>2025 | 2025/<br>2026 |
| Cathays High School    | 782                              | 847           | 913           | 917           | 1021          | 1115                               | 1206          | 1297          | 1372          | 1426          |
| Cardiff High School    | 1554                             | 1627          | 1643          | 1645          | 1776          | 1761                               | 1736          | 1732          | 1728          | 1728          |
| Fitzalan High School   | 1712                             | 1709          | 1724          | 1742          | 1776          | 1770                               | 1783          | 1786          | 1786          | 1787          |
| Llanishen High School  | 1543                             | 1546          | 1542          | 1557          | 1650          | 1701                               | 1729          | 1748          | 1757          | 1757          |
| Whitchurch High School | 2255                             | 2285          | 2339          | 2373          | 2431          | 2409                               | 2409          | 2402          | 2394          | 2392          |
| Willows High School    | 554                              | 581           | 619           | 665           | 704           | 698                                | 706           | 712           | 719           | 758           |

Table 12: Number of pupils enrolled at local schools if the proposals **were not implemented**

| School                 | Recent number of pupils enrolled |               |               |               |               | Forecast number of pupils enrolled |               |               |               |               |
|------------------------|----------------------------------|---------------|---------------|---------------|---------------|------------------------------------|---------------|---------------|---------------|---------------|
|                        | 2016/<br>2017                    | 2017/<br>2018 | 2018/<br>2019 | 2019/<br>2020 | 2020/<br>2021 | 2021/<br>2022                      | 2022/<br>2023 | 2023/<br>2024 | 2024/<br>2025 | 2025/<br>2026 |
| Cathays High School    | 782                              | 847           | 913           | 917           | 1021          | 1115                               | 1206          | 1231          | 1240          | 1228          |
| Cardiff High School    | 1554                             | 1627          | 1643          | 1645          | 1776          | 1761                               | 1736          | 1732          | 1728          | 1728          |
| Fitzalan High School   | 1712                             | 1709          | 1724          | 1742          | 1776          | 1770                               | 1783          | 1786          | 1786          | 1787          |
| Llanishen High School  | 1543                             | 1546          | 1542          | 1557          | 1650          | 1701                               | 1729          | 1748          | 1757          | 1757          |
| Whitchurch High School | 2255                             | 2285          | 2339          | 2373          | 2431          | 2409                               | 2409          | 2402          | 2394          | 2392          |
| Willows High School    | 554                              | 581           | 619           | 665           | 704           | 698                                | 706           | 712           | 719           | 758           |
| Pupils to be placed*   | 0                                | 0             | 0             | 0             | 0             | 0                                  | 0             | 66            | 132           | 198           |

\*If the proposed changes were not to be implemented, it is expected that most of these additional pupils would be placed at other community or faith-based secondary schools in Cardiff. A number of schools are expected to be fully subscribed at entry to the schools. The number enrolled at most schools may therefore not change, but some of the pupils enrolled to those schools would be from different areas of the city. Overall, it is expected that the number of pupils admitted to Willows High School would increase by the greatest amount.

The proposed expansion of Cathays High School is not anticipated to affect the take up of places at Welsh-medium community secondary schools or faith-based schools serving the area.



## Admission Arrangements

There are no plans to change the Council's policy on the admission of children to schools as a result of this proposal.

Detailed information about admission arrangements is in the Council's Admission to Schools booklet. You can find this information on the Council's website ([www.cardiff.gov.uk](http://www.cardiff.gov.uk)).

Consultation on changes to English-medium community secondary school catchment areas would be required at the appropriate time in order to provide a suitable balance in the supply of and take-up of places. Catchment areas are only part of the school admission oversubscription criteria and being resident within a catchment area is not a guarantee of admission. The Council has to ensure sufficient places in the secondary sector regardless of catchment boundaries.

The Council will continue to manage all admissions to the ASC provision at Cathays High School in accordance with the ALN Code of Practice. Admissions to ALN provision are county-wide.

## Interim Arrangements

In accordance with the limitations set out within the School Organisation Code, the Council has agreed a temporary increase to the Admission Number at Cathays High School, from 165 places to 240 places at entry to Year 7 in the 2020/21 school year, to meet the increased demand for places.

It is proposed that the admission number of 240 places would be permanently implemented from September 2023, in accordance with the requirements set out in the School Organisation Code. Pupil projections will be kept under review and interim arrangements would be brought forward as necessary to ensure continuation of education for pupils.

## What are the benefits of the proposal?

- the proposal would increase the number of English-medium secondary school places. It would contribute towards meeting projected demand in the local and wider area;
- the proposal would increase the number of SRB places for learners aged 11 – 19 with an Autistic Spectrum Condition;
- new school buildings will address the substandard condition of the existing buildings and reduce the maintenance backlog;
- new build schools provide high quality facilities, which improve learning choices and opportunities for pupils. The Cardiff 2030 vision sets out the need to provide high quality school places. High quality learning environments have a strong impact on improving pupil outcomes;
- the new building will be fully accessible and compliant with the Equality Act 2010;
- improved outdoor sports facilities would provide enhanced opportunities for both pupil and community use.

## Potential disadvantages of the proposal

- there is potential for increased traffic congestion around the school site at the start and end of the school day, as the number of pupils on roll at the school increases. However, the Council would work with the Governing Body of the school to develop a Travel Plan to minimise any potential disruption;
- some pupils with ALN can find change difficult. They may find moving to a new building on a new site unsettling. We know they will need carefully planned support to adapt to the new setting. However, there would be sufficient time to plan and support such a transition.

## Risks associated with the proposal

- there is a risk that the projected increase in the number of pupils does not happen. However, based on the number of pupils in primary schools in Cardiff and proposed new housing in a number of areas of Cardiff this appears unlikely. The Council will keep its projections under review and would respond to any such changes in demand if required;
- there may be development constraints that have not yet been identified. If any became apparent, there could be implications for cost and delay. Site surveys and geo-technical reports would take place. These would provide further information around this and inform management strategies;
- the proposal may not be achievable if Welsh Government capital funding is not secured at the business case stage;
- if the Council did not get this funding from the Welsh Government then the Council would be fully responsible for all costs relating to the proposal. In this case, investment options would be reviewed to ensure the delivery of sufficient school places.

## Alternative Options

### ‘Doing Nothing’

The Cathays High School buildings have a backlog of maintenance issues and ‘doing nothing’ is not an appropriate option. Addressing the maintenance backlog would only address health and safety issues. It would not provide a sustainable school for the future.

The Council would also need to identify alternative means of accommodating the projected increase in pupils requiring secondary school places in coming years.

### Refurbishment of existing buildings

Refurbishment would address the capacity needs at Cathays High School for its catchment population but would not result in the increase in the number of English-medium places required at secondary age over a wider area. Refurbishing the school would not be cost effective and would not significantly improve the learning environment. There may still be long-term maintenance issues, which would compromise the value for money which can be achieved through the investment of public money.

### Replacement of buildings on the existing site

Whilst the existing Cathays site could potentially be used to accommodate a replacement school building, the current site would still be insufficient in size to allow the new school to be built whilst the school remains operational. This would result in pupils having to be accommodated off site for the duration of any new build resulting in significant disruption to education and increased costs.

## Financial Matters

The proposed scheme forms part of the 21st Century School Programme and is to be funded through a Mutual Investment Model (MIM). The new school will be constructed via a Special Purpose Vehicle and the Council will make a net contribution of 19 % (with WG providing 81 % of the revenue funding required) towards the annual unitary charge for a period of 25 years.

Expenditure required that does not fall within the scope of the MIM will be met jointly by the Council and Welsh Government with Welsh Government funding a minimum of 65 % via the 21st Century Schools Band B capital grant.

Operational costs incurred in managing the scheme and transition from current buildings into new buildings will be met from a dedicated revenue budget.

The additional revenue costs of increased pupil numbers will be met through the school funding formula on the basis of pupil numbers.

## Human Resources Matters

The proposed expansion of Cathays High School would require the Governing Body to consider their workforce requirements in readiness for expansion and the potential increased staff numbers required. In the event that any vacancies arise, these should be considered as redeployment opportunities for staff on the school redeployment register. In addition, full consultation with staff and trade union colleagues would be needed to ensure there is a smooth transition into the new school building.

Further HR implications of the proposal would need to be determined as the project develops, particularly in relation to the operation of the MIM scheme outlined above. Further guidance is required from Welsh Government to understand the full working arrangements in relation to facilities management to assess the impact, if any, on current school staff. The Governing Body and the school's leadership team would also need to consider whether any staffing changes are required to support the use of school premises by the wider community. HR People Services will provide advice and support as necessary.

Eastern High School



## Transport Matters

The Council's policy is to increase the use of sustainable modes of transport. Most journeys to education in Cardiff are within 3km of people's homes. Improvements to the safety of roads and routes for walking and cycling within school catchment areas would encourage more active travel. There are well evidenced health and wellbeing benefits from walking, cycling and scooting to school as opposed to travelling by car.

This proposal will increase educational activity on this site through the expansion of mainstream and SRB places. The expanded provision will result in more trips to the site. These have the potential to add/alter existing pressures on the local highway network.

The Council's Local Development Plan (2006-2026) includes a target of 50% of all journeys to be made by sustainable transport. This will be achieved by ensuring that new development is fully integrated with transport infrastructure. This mitigates the transport impacts and maximises opportunities for travel by sustainable modes. It is important that this new school facility fully reflects the Council's transport policies and makes a positive contribution to modal shift. This can be achieved by ensuring that the design and layout of buildings and the site access arrangements prioritise travel by active and sustainable modes. The provision of on-site facilities, such as secure cycle parking spaces and lockers for storage of cycling clothes and equipment will also be essential.

Vehicular access to the school site will need to be limited to staff and vehicles requiring access for essential servicing. Currently no pupils (other than SRB pupils) are eligible for learner transport. The SRB pupil learner transport will need appropriate suitably segregated facilities for drop-off and pick-up. However, facilities for general pick up and drop off of other pupils by car should not be provided.

Parking on street near the school will be discouraged through the introduction of appropriate parking restrictions. The Council is currently introducing School Streets in selected suitable locations; the use of Traffic Regulation Orders to restrict vehicular access on streets outside schools at morning drop-off and afternoon pick-up times. This approach could potentially be used to restrict parking and access associated with the new school. The expansion of Cathays High School, utilising the Maindy Centre site and the existing school site may necessitate the closure of part of Crown Way to vehicles.

Transport mitigation for the development will be identified through the Transport Assessment (TA) process. The first part of the TA has now assessed the traffic impact on the highway network. It has identified that potential changes are expected to result in some additional queuing at peak periods. However it is considered that the overall traffic impact of the development can be accommodated by the network.

The subsequent completion of the full TA will identify necessary works, including any safety measures, traffic calming and facilities for pedestrians, cyclists and scooting.

The Council is committed to ensuring that every school in Cardiff has an Active Travel Plan by 2022. Such a plan identifies actions by the school to support and encourage active travel to school and will also identify any improvements to on-site and off-site infrastructure required to facilitate active journeys.

The Active Travel Plan for the new school should be linked to the Active Travel Plans for the local cluster schools. This will help to encourage active travel across each age group and ensure that all pupils entering the new Cathays High School are equipped with the skills they need to travel to school by active modes. The Council's Active Travel Plans officers can support the development of the Active Travel Plan. Other support can be offered through the Council's Road Safety Team which delivers National Standards Cycle Training to schools in Cardiff.

## Learner Travel Arrangements

There are no plans to change the Council's policy on the transport of children to and from school. Any pupils affected by this proposal would be offered the same support with transport as is provided throughout Cardiff and in line with the same criteria that apply across Cardiff.

The Council's transport policy for school children can be viewed on the Council's website ([www.cardiff.gov.uk](http://www.cardiff.gov.uk))

In the event of the proposal being progressed to implementation, all pupil's entitlement to free home to school transport will be re-assessed from the new location.

The Council provides free home to school transport for pupils with statements for ALN dependent on the shortest available walking distance that they live from their home address to the school/base location nearest appropriate gate.

The distance criteria used are that pupils of primary school age need to live two or more miles, and secondary aged pupils three or more miles, from the school via the shortest available walking distance to the nearest appropriate gate.

For pupils with ALN the Council also takes into consideration their:

- cognitive age, and then applies the relevant distance criteria for the cognitive age
- any disabilities that will impact their ability to walk these distances.

All pupils distance assessments for entitlement to free home to school transport are undertaken on the basis that the child is accompanied on the route to school as appropriate. It is the responsibility of parents or guardians of a child to arrange for their child to be accompanied along the walking route to school.

## Partnerships

The 'Cardiff Commitment' ([www.cardiffcommitment.co.uk](http://www.cardiffcommitment.co.uk)) is dedicated to inspiring ambition, creating opportunities and developing skills in all children and young people, to support their progression and future career choices. Through school, employer, community, voluntary sector, higher and further education partnerships, the Cardiff Commitment aims to support all Cardiff pupils to realise their potential and contribute to the economic growth of our capital city. Working in partnership, the vision is to ensure that no Cardiff child or young person is left behind and that the talents of all are recognised and nurtured.

To date over 200 partners have pledged to support Cardiff Commitment and the programme priorities are aligned to the following principles:

- Enhancing delivery of the Curriculum for Wales 2022 by supporting schools across Cardiff with access to knowledge, skills and experiences that bring the curriculum to life and make teaching and learning relevant for the children and young people of today in readiness for the jobs of tomorrow.
- Supporting the realisation of the four key purposes of the Curriculum for Wales 2022, enabling learners to develop as:
  - ambitious, capable learners ready to learn throughout their lives
  - enterprising, creative contributors, ready to play a full part in life and work
  - ethical, informed citizens of Wales and the world
  - healthy, confident individuals, ready to lead fulfilling lives as valued members of society.
- Aligning the knowledge, opportunities and skills children and young people experience in Cardiff Schools to the needs of employers in the economic growth sectors in the Cardiff Capital Region, Wales and globally.
- Raising awareness of the breadth of career opportunities available in the Cardiff Capital Region and beyond, to develop skills to sculpt future growth for the benefit of all.
- Securing sustainable progression routes for all young people post 16.



The Council's proposals for Band B of the 21st Century Schools Programme, and the Cardiff 2030 strategy, clearly state the critical link between improving the learning environment, raising standards of achievement and positive learner progression beyond statutory schooling.

The Council is keen to assist with the development of opportunities between schools and business to create a sustainable pool of talent for future workforce needs. ESTYNs most recent report on Preparing for the Curriculum for Wales – case studies and cameos from secondary, all-age and special schools November 2020 cites Cantonian High School as an example of where integrating real life experiences into the curriculum through Cardiff Commitment facilitated partnerships has been a success and positively impacted young people.

## Impact of the proposal on the Welsh Language

The Council does not expect any negative impact on the Welsh Language from this proposal.

The proposal would not change the number of Welsh-medium secondary school places available in the area.

Welsh is taught in English-medium schools in line with the National Curriculum. This would continue to apply if Cathays High School was expanded.

The Council works closely and constructively with partners on its Welsh Education Forum (WEF). The forum includes representatives of nursery, primary, secondary and further education, childcare, RhAG and the Welsh Government. It actively informs the planning of Welsh-medium places. It also supports the Council's plan to sustainably increase the number of Welsh learners. This includes learners in Welsh-medium schools and those learning Welsh in English-medium schools.

The Council and the Welsh Education Forum are committed to driving the increase in the number of pupils in Welsh-medium education. They aim to meet the targets within Cardiff's Welsh Education Strategic Plan (WESP) and set out in the Welsh Government's Cymraeg 2050 strategy.

The Council monitors birth rates, the number of extra pupils that may come from new housing and the patterns of how many pupils are in Welsh-medium schools. This allows the Council to bring forward suitable plans to deal with any increase in demand.

Forecasts suggest that extra places will also be needed in Welsh-medium secondary schools. Separate proposals will be brought forward to address this. This will be at an appropriate time to ensure there are enough places available.

The Council must make sure that the expansion of school provision is brought forward in a strategic and timely manner.

These proposals do not include opportunities to develop Welsh medium ALN provision. The Council is taking separate steps to expand specialist ALN provision in the Welsh medium sector. This is through the WESP, the Educational Tribunal (ALNET) Act Regional Implementation Plan and the Cardiff ALN Strategy.

Since 2016 the number of SRB places for Welsh medium learners has increased from 20 SRB places at Ysgol Coed Y Gof to 60 SRB places between Ysgol Coed Y Gof and Ysgol Gymraeg Pwll Coch. At January 2019, about 25 SRB places will be taken up. There is spare capacity for growth in the Welsh-medium sector of up to 35 places.

In addition to these, a Welsh-medium primary 'wellbeing class' was established in 2016-17. It offers 6 month placements for up to 8 pupils in each year group with significant emotional health and wellbeing needs and 26 assessment/ 'Pupil Referral Unit -type' places.

In January 2018, a secondary ‘virtual Pupil Referral Unit’ offering specialist support to pupils learning through the medium of Welsh, at risk of exclusion was established, offering places for up to 18 pupils in each year group in the three Welsh medium secondary schools. These are sufficient to meet demand.

The Council is keeping capacity under review and will take steps to extend places in response to pupil needs.

In addition to the establishment of a greater number of places for learners in Cardiff with ALN, the Council are leading on the ALNET Regional Implementation Plan, Priority 7. This is to ‘Review and improve Welsh medium provision and specialist support to increase regional capacity to support ALN’.

The objectives are to:

- Analyse how widespread ALN and the level of need are in the Welsh-medium sector. This will look at each local authority across the region (Cardiff, Vale of Glamorgan, Bridgend, Rhondda Cynon Taf, Merthyr);
- Map what Welsh-medium provision and support is available across the region;
- Increase sharing of good practice for ALN in the Welsh medium sector;
- Ensure that the ALNET Regional Implementation Plan supports and complements regional WESP priorities.

## Governance Arrangements

There are no proposed changes to governance arrangements arising out of this proposal.

## Equalities

An Equality Impact Assessment (EIA) is a process that looks at a policy, project or scheme to make sure it does not discriminate against anyone based on the protected characteristics set out in the Equality Act 2010 (age, disability, gender reassignment, marriage & civil partnership, pregnancy & maternity, race, religion/ belief, sex, sexual orientation).

An initial Equality Impact Assessment has been carried out. It concluded that the proposed changes would not negatively affect a particular group in society.

This assessment will be reviewed after the consultation and at key points if the proposals were to proceed.

If the proposal goes ahead, another equality impact assessment would be carried out at the design stage. This would identify accessibility to the new build high school site. The equality impact assessment would take into account policies such as the Equality Act 2010, TAN 12: Design 2014 as well as building regulations such as BS8300, Part M and relevant Building Bulletins.

Cardiff West Community High



## Community Impact

The following are taken into account when considering a proposal:

- Public Open Space
- parkland
- noise
- traffic congestion

Officers will work with schools, local members and any community group to make sure that the proposal avoids negative impacts if possible.

Cathays High School enables a number of community organisations to make use of its site outside of school hours. These organisations will be consulted on the proposed changes and consideration will be given to how to support these organisations in the proposed new build school.

The open space at Maindy is currently used for informal leisure by the local community – exercise, dog walking, access between Gelligaer Street and Crown Way/North Road, and general leisure activities.

It is recognised this is one of few open spaces for residents in Cathays, Maindy and Gabalfa and therefore the new development will provide space and access for the community to continue these informal activities in community green spaces.

In addition, it is proposed that the playground at Gelligaer Street will remain, the BMX track for community use will be retained or relocated elsewhere on the Maindy or current school site. The open-access MUGAs will also continue to be provided.

Many schools have established or are developing sports and wider leisure provision for use by the public.

A key objective is to enable third party access to the sports facilities at schools. This would be on a sustainable financial basis.

Welsh Government's aim for shared facilities in community-focused schools are to:

- provide opportunities for the local community and sports organisations to participate in sport and physical activity for health improvement and development of their skills, particularly amongst low participant groups;
- operate in line with the national agenda for sport taking into account nationally adopted strategies;
- generate positive attitudes in sport and physical activity by young people and reducing the dropout rate in sports participation with age;
- increase the number of people of all ages and abilities participating in sport and physical activity including people with disabilities;
- use the facilities to encourage the range, quality and number of school sports club links and to stimulate competition that is inclusive of young people and adults;
- provide affordable access to the facilities and to be self-financing and cost neutral in the first instance, generating sustainable income for the school in the future.

The Council will make the most of Community Benefits wherever possible. This would include benefits for children and young people, through its procurement practices, and has explicitly identified this as one aspect of its programme to promote children's rights as a participating member of the UNICEF Child Rights Partner Programme.

The Council intends to work proactively with contractors and the local community to progress Community Benefit procurement initiatives and exchange best practice wherever possible.

The Council will work with contractors to ensure that their supply chains are aware of the Council's aspirations for Community Benefits and ensure the credentials of suppliers in this respect. This will safeguard, wherever possible, the Council's aspiration to secure Community Benefits is integrated into the specification.

In line with Welsh Government guidelines on Community Benefits, the Council will strive to meet the benchmark targets.

These four targets are:

- Jobs
- Apprenticeships
- STEM Engagement
- Training

## Wellbeing of Future Generations

The Wellbeing of Future Generations (Wales) Act 2015 requires the Council to think about the long-term effect of decisions, and to work better with people, communities and each other and to prevent persistent problems such as poverty, health inequalities and climate change.

In line with the Act, Cardiff's Band B programme is committed to providing local schools for local children. It encourages use of sustainable modes of travel to schools, such as walking and cycling. Each school project takes into account key transport issues when they are being designed. The firm need to provide safer routes to encourage walking, cycling and other active travel modes to schools is considered and supported.

With the current investments in digital working, blended learning and improved ICT across the city, student movements may be further reduced as mobile technology develops. This allows more flexible teaching methods. These have the potential to result in a more efficient Travel Plan and further contribute to the Council's targets to reduce its carbon emissions.

We are keen to maximise the long-term impact of this investment. Any design taken forward for this proposal would be developed to ensure the delivery of high quality modern facilities. Facilities would be able to respond to pupils' needs and support the delivery of effective teaching and learning methods. Facilities would be designed to incorporate the flexibility to take account of changes in needs over time. These could be affected by changing demographics and pupil numbers, changing curriculum and changing types of pupil needs.

## Potential Disruption to Pupils

The Council has significant experience in the successful delivery of building projects on the sites of occupied schools as a result of progressing a large and growing school organisation programme. The proposed replacement of Cathays High School with separate new buildings would limit the disruption to pupils, staff and parents.

Any building work carried out would be managed effectively in consultation with the school to ensure the full curriculum continues to be delivered and that high education standards and safety standards are maintained.

## What would happen to the existing Cathays High School site?

The future use of the existing High School site will be subject to further consideration, taking account of the views of a range of stakeholders.

The construction of new facilities for Cathays High School will take place on the Maindy Centre site and potentially on a proportion of the existing site.

It is proposed that the design of the new school site will support open community access to some multi use games areas outside of school hours and will re-provide community land where possible. The land south of the existing Maindy cycle track and other areas will be made available for exercise; dog walking; access between Gelligaer Street and Crown Way/North Road; and general leisure activities. The BMX track is expected to be retained, but could potentially be relocated elsewhere on the Maindy or current school site should it be deemed beneficial to the project and the community.

The design of the school building, the layout of the school site, open space and school areas open for community access would each form part of the design.

## Frequently asked questions

### Will pupils' education be disrupted as a result of the proposals?

The Council has significant experience in the successful delivery of building projects on the sites of occupied schools resulting from the progression of a large and growing school organisation programme.

Pupils enrolled at Cathays High School would remain on their current site until the new build school facilities are ready.

### What is the intended timescale of development?

If the proposal is progressed, it is intended that building work would start in the 2023/24 school year and be completed in readiness for pupils to use all new facilities in the 2025/26 school year.

### Will there be a new school uniform?

There are no proposed changes to school uniform arising out of this proposal.

### Will the catchment area change?

Cardiff's Band B 21st Century Schools Programme proposes investment in five English-medium community secondary schools, and an increase in the number of school places overall. To date, proposals for Fitzalan High School and Cantonian High School has been approved and are being progressed.

Consultation on changes to school catchment areas would be required at the appropriate time in order to provide a suitable balance in the supply of and take-up of places in each area and city-wide.



# Next steps, how to make your views known and feedback form

## What happens next?

### Key Dates

The Council will collect and summarise the feedback from this consultation. Council officers will then report this to the Council's Cabinet to report stakeholders views to elected members, and to inform decision making. This consultation report will be available for anyone to view/download on the Council website. You can also get a copy by using the contact details in this document.

If the proposals are agreed to proceed following consultation there are a number of further stages that the Council would have to go through before a final decision is made.

These stages are set out in Table 13 below:

| Table 13: Future stages (This timetable may be subject to change)   |                            |
|---|----------------------------|
| Statutory Process   | Timescale                  |
| Consultation Period   | 29 January - 19 March 2021 |
| Consultation report considered by the Council Cabinet and published on the Council website                              | June 2021                  |
| Expected date for start of Objection Period, when statutory notice has been issued (when formal objections can be made) | June 2021                  |
| Expected date for end of Objection Period   | July 2021                  |
| Final decision (determination) by the Council's Cabinet   | October 2021               |
| Objection report published on the Council website and notification of Cabinet's decision                                | October 2021               |

### Consultation period

The consultation period for these proposals starts on 29 January 2021 and ends on 19 March 2021.

See page 37 for further details of how to respond and make your views known.

The Council will publish a consultation report on its website. The report must be published at least two weeks prior to the publication of a statutory notice.

You can also ask for a hard copy of the report.

The report will go over the issues raised during the consultation period and give the Council's response to these issues. The report will also contain Estyn's view of the proposals.

The Council's Cabinet will consider the consultation report and decide whether or not to go ahead with the proposed changes.

If the Cabinet decides to continue with the changes the Council must publish a document called a 'statutory notice'. This is an official statement saying that the changes will go ahead.

## Statutory Notice

A statutory notice is the formal publication of a finalised proposal. The approval to publish a statutory notice must be given by the Council's Cabinet. This would only be considered after the Cabinet have received a report on all the consultation responses. This is a legal requirement as outlined in the School Organisation Code 2018.

The Council would publish the statutory notice on its website. It would also put copies of the notice at or near the main entrance to the school(s)/site(s) affected by the notice. Schools that are affected would also be given copies of the notice to give out to pupils, parents, guardians, and staff members (the school may also distribute the notice by email). The notice sets out the details of the proposals and asks anyone who wants to object to do so. Objections must be written. They must be sent to the Council within the dates given on the notice.

## Determination of the proposals

Cardiff Council Cabinet would determine the proposal. This means they will make a final decision on whether the changes go ahead. The Cabinet may decide to approve or reject the proposal, or they may approve the proposal with some changes (modifications). The Cabinet will take any objections received in the Objection Period into account when making this decision.

## Decision Notification

After determination, Cardiff Council would let everyone affected by the proposal know what the decision was. It will also be published on the Council's website.

Cardiff West Community High



Recent new build primary school in Cardiff - Pontprennau Primary School



# Have Your Say!

You can complete this response form online at [www.cardiff.gov.uk/cathayshighproposals](http://www.cardiff.gov.uk/cathayshighproposals)

We are proposing to:

- Expand Cathays High School from 1,072 places (5.5 Forms of Entry with 247 sixth form places) to 1,450 places (8 Forms of Entry with 250 sixth form places), from September 2023;
- Replace the Cathays High School buildings with new build accommodation on the Maindy Centre site adjacent to Crown Way and North Road;
- Expand the current Specialist Resource Base (SRB) for learners with Autism Spectrum Condition from 16 to 50 places in purpose-built accommodation in the new school buildings;
- Upgrade community facilities in Cathays and Gabalfa through the significantly enhanced school facilities being made available for shared use with the wider local community;
- Provide space for the local community to continue to have access to off-road open spaces for informal leisure use, recognising this is the current use at the Maindy site.

## 1. Please tell us whether you are responding as (tick all that apply)

- |   |   |
|---|---|
| <input type="checkbox"/> Parent or Guardian*          | <input type="checkbox"/> Grandparent*   |
| <input type="checkbox"/> Member of Staff*             | <input type="checkbox"/> Pupil*         |
| <input type="checkbox"/> Governor*                    | <input type="checkbox"/> Local Resident |
| <input type="checkbox"/> Other (please specify) _____ |   |

Please confirm which schools  
you are affiliated with

## 2. Do you support the proposal to increase the number of places at Cathays High School from 1,072 to 1,450?

Yes ☐ No ☐ No opinion ☐

Please explain why

## 3. Do you support the proposal to transfer Cathays High School into a new building, with upgraded community facilities?

Yes ☐ No ☐ No opinion ☐

Please explain why

**4. Do you agree that the number of places in the Specialist Resource Base at Cathays High School should increase from 16 places to 50 places?**

Yes ☐

No ☐

No opinion ☐

Please explain why

**5. Are there any changes you think could improve these proposals?**

**6. Are there any alternatives options you would like to suggest?**

**7. Do you have any other comments?**

Name \_\_\_\_\_

Address \_\_\_\_\_

Post Code \_\_\_\_\_

**The closing date for responses to this consultation is 19 March 2021.**

The Council is not able to consider any consultation responses received after this date.

Consultation responses will **not** be counted as objections to the proposal.

Objections can only be registered following publication of a statutory notice.

If you wish to be notified of publication of the Consultation report please provide an email address. If you do not provide an email address we cannot keep you up to date

**Thank you for your comments**

**Please return this form to the School Organisation Planning Team, Room 401, County Hall, CF10 4UW by no later than 19 March 2021.**

The information you have provided above will be processed by Cardiff Council in line with the Data Protection Act 2018 and General Data Protection Regulation. The information provided to us in relation to this consultation will be treated as confidential but it may be used by the Council or disclosed to others when required by law. The purpose of processing the personal data is required to perform a specific task in the public interest. Any responses received can be requested under the Freedom of Information Act and may have to be made public, however any information that would identify an individual such as name and address would be removed.

For further information on how Cardiff Council manages personal information, see our full Privacy Policy on the Council's website [https://www.cardiff.gov.uk/ENG/Home/New\\_Disclaimer/Pages/default.aspx](https://www.cardiff.gov.uk/ENG/Home/New_Disclaimer/Pages/default.aspx)